

MIRACLE
Employment Service Pvt Ltd

“Excellence and Exclusivity in performance.”



ABOUT US

MIRACLE EMPLOYMENT SERVICE PVT. LTD., holding CR No. 46248/063/064 (Government License No. 719/064/65), is an ISO 9001:2015 certified leading company in the field of human resources development and recruitment since 2007 in Nepal & the international markets. Through its experience spanning over 18 years, Miracle Employment Service undertook to provide a wide range of employment services in these markets, all from its headquarters in Kathmandu, the capital of Nepal, which is considered a prime strategic location due to its presence in the center of the embassy area and its close range to 5-star 'hotels, international airline offices, and Tribhuvan International Airport (TIA) Kathmandu, in addition to its easy access to other areas of attraction.



“For Miracle employment, quality always matters...”



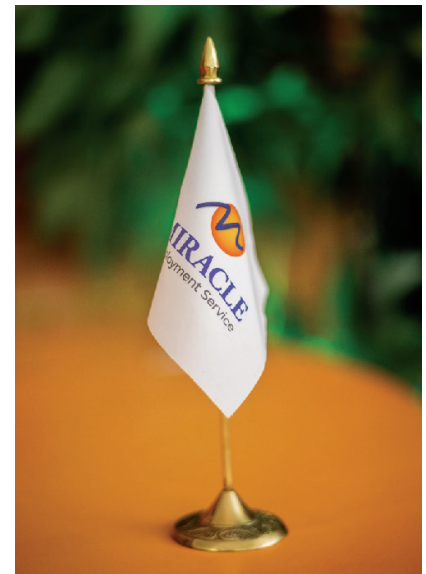
MESSAGE FROM

CHAIRMAN / MD

The commitment made by Miracle Employment Service since its formation, has paved the way for it to move forward in the path of success which has been going on for nearly two decades, to become one of the leading companies for human resource development and abroad recruitment in the Nepal.

We have made great effort to build a good reputation for excellence through our style of business management that is governed by values, ethics, standards, commitment and quality, to gain the trust of all those we work with by implementing what we are committed to, with the highest standards of professionalism and work ethics.

BEDU UPRETY



“HR solutions, in one place”



VISION

To be the leading business organization locally and internationally, in linking business owners with job seekers, and building a new recruitment concept that achieve sustainable growth for both parties.

OBJECTIVES

To provide well experienced manpower to the companies around the globe & clients'

QUALITY

We ensure that candidates provided for client interviews are fit for the clients' requirements.

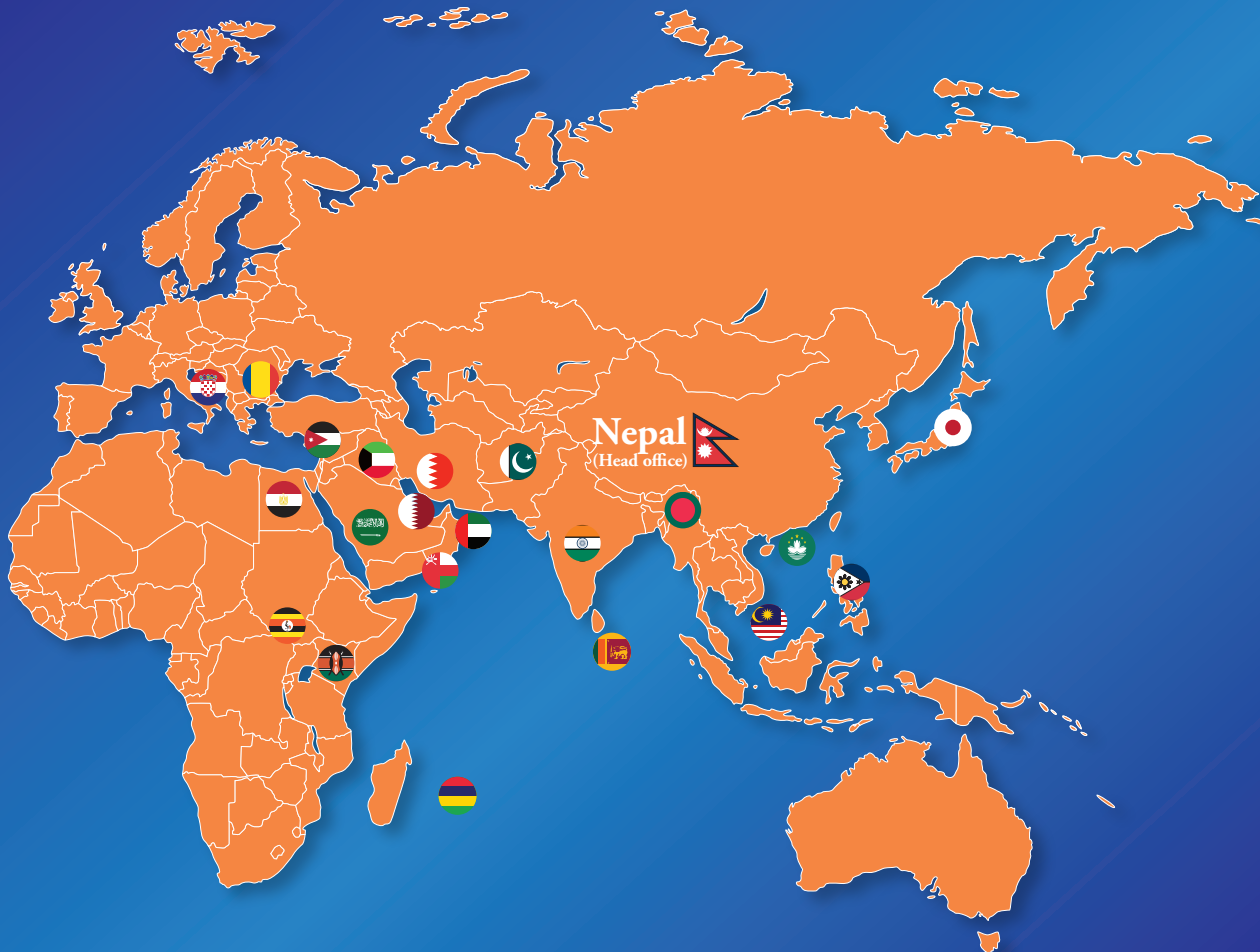
MISSION

Providing modern services of high quality to ensure the satisfaction and confidence of our customers in all areas of our business.

“Action is always a base to our Success”

OUR GLOBAL PRESENCE

In addition to our clients in GCC (***Qatar, UAE, Saudi Arabia, Kuwait, Oman, Bahrain***) countries, Europe, Japan, Malaysia, Macao, Mauritius & other countries, we made our Global Presence to meet all the inquiries of our clients from other nationalities, to save their time, effort, costs, and to make the recruitment process to be through one operations center, which is the Miracle Employment Service, to achieve and apply the same standards required in selecting the candidates to be hired in terms of quality and commitment in countries like India, Bangladesh, Pakistan, SriLanka, Philippines, Egypt & Kenya.



OUR CLIENTS

 <p>مجموعة المفتاح ALMUFTAH GROUP</p>	 <p>bfim</p>	 <p>Khonaini Petroleum Service</p>	 <p>إمداد emdad</p>	 <p>Advan LAUNDRY</p>	 <p>PERALATAN JENTERA ELEKTRIK GUAN YUEN HARDWARE SDN. BHD. 廣源五金電器有限公司</p>
 <p>SAUDI ARABIAN BAYTUR</p>	 <p>NPCC National Power Construction Corporation PAKISTAN</p>	 <p>شركة فيصل عبدالله بن لادن للبناء والتشييد Faisal Abdullah Awad Binladen Construction Company</p>	 <p>ASG مجموعة الشريف القابضة Al Sharif Group Holding</p>	 <p>دليل المشاعر DALIL ALMASHAEIR</p>	 <p>RAMACO Trading and Contracting CO.W.L.L. شركة راماكو للتجارة والمقاولات ذ.م.م.</p>
 <p>شركة كاتيون ناتي الخميني المحدودة KATOEN NATIE KHOMINI CO.LTD OUR PEOPLE MAKE THE DIFFERENCE</p>	 <p>مجموعة الهنوف ALHANOUF GROUP</p>	 <p>ST Print Innovative Printing. Vibrant Results.</p>	 <p>SPB ROLLERS SDN BHD</p>	 <p>INTEREPO Powered by SCRUT</p>	 <p>CTS METAL WORKS SDN. BHD.</p>
 <p>ABR ASIABOOMRESOURCES</p>	 <p>الراجحي Al-RAJHI Building & Construction</p>	 <p>ALWAZZAN RESTAURANTS الوزان للطعام 1997</p>	 <p>DOW INDUSTRIES</p>	 <p>الرشيد ALRASHEED</p>	 <p>HongSeng INDUSTRIES CO.</p>
 <p>VISION INTERNATIONAL SCHOOL</p>	 <p>ALEC HOLDINGS</p>	 <p>شركة مجموعة الشريف وكي. ات. س. المحدودة AL SHARIF GROUP & KEC LTD.CO.</p>	 <p>Relco</p>	 <p>CLASSICAL PALACE القصر الكلاسيكي للديكور والتجارة Architecture. Interiors. Landscaping</p>	 <p>Al Bustan Farms مزارع البستان</p>
 <p>ELSEWEDY ELECTRIC</p>	 <p>Yummy Yummy</p>	 <p>GREEN MART SUPERMARKET</p>	 <p>Bec مجموعة شركات بكن الإمارات BEIJING EMIRATES GROUP OF COMPANIES</p>	 <p>دلسكو DULSCO</p>	 <p>ANYTIME FITNESS</p>

OUR CLIENTS

 SUHAIL مجموعة سهيل الصناعية القابضة SUHAIL INDUSTRIAL HOLDING GROUP	 Five Stars Plastic Industries (M) Sdn Bhd	 BHATIA	 UNITED HOSPITALITY MANAGEMENT	 شركة دور الضيافة Dor Hospitality Company	 CASTLE INFRASTRUCTURE W.L.L.
 Mapa	 مادري MADA مدى للسجاد • mada carpets	 Greentech Transforming Air Purification	 KATERRA	 الشركة العالمية للأنابيب Global Pipe Company	 شركة الخليج للمقاولات GULF CONTRACTING
 شركة إيوان للموارد البشرية EWAN FOR HUMAN RESOURCES	 شركة داز السعودية المحدودة SAUDI DAZ COMPANY LIMITED	 Simramis CATERING COMPANY	 COLD OASIS GROUP COG H2O Comprehensive Solutions Service	 TANDOOR RESTAURANT	 الرابية اللوجستية RABIYAH LOGISTICS
 AGNICE CONTRACTING L.L.C.	 دلمون للخرسانة المسبوكة Delmon Precast	 K	 سكيب SACEP CONSTRUCT	 شركة الخليج للبناء والبناء UGCC UNITED GULF CONSTRUCTION CO. W.L.L.	 ARMADA
 NESMA	 دعم الأعمال للموارد البشرية Human Resources Business Support	 مجموعة عصام خيرى قناني Isam Khairi Kabbani Group	 SIMPLEX INFRASTRUCTURES LTD.	 BOUYGUES CONSTRUCTION	 KHARAFI NATIONAL
 arabtec holding	 PETROSERV LIMITED	 KEC KEC INTERNATIONAL LIMITED	 MAN ENTERPRISE	 أزميل AZMEEL شركة ازميل للمقاولات (الخاصة بأعمال إعادة البناء العالي) Azmeel Contracting Co.	 المنهل Al Manhal

OUR
CLIENTS

			 <p>Darwish Interserve Facility Management W.L.L. الدرويش انترسيرف لإدارة المرافق ذ.م.م.</p>		
 <p>Khonaini International Company شركة الخيني العالمية</p>		 <p>روابي القابضة Rawabi Holding</p>	 <p>شركة بوم للبناء والتشييد BOOMCONSTRUCTION</p>		
 <p>SAMKO INTERNATIONAL CO. W.L.L.</p>	 <p>حس حسن للتجارة والمقاولات HCC HASSANESCO TRADING & CONTRACTING</p>				
	 <p>الغريير Al Ghurair</p>				

DEPARTMENT OF MARKETING

Analyzing the general indicators of labor markets locally and globally is a continuous process for our marketing staff who have high communication and analytical skills, and pays a lot of attention to details. Our Marketing Team helps the company to enter into strong relationships with new clients and to build the confidence of Miracle Employment clients in the ability of this team to understand and meet their needs through continuous survey to set a foot on the latest developments in skills and experiences used in global markets, and changes in salaries and other privileges for different professions.



BALDEV KARKI
Executive Director

DEPARTMENT OF OPERATIONS

Operations Department is the beating heart of Miracle Employment Service as it is the responsible party to achieve and execute company tasks on the ground and to build up a comprehensive coordination between other departments activities.

Operations Department adopts 24/7 tactics that make the company able to provide its services to its clients in a short period of time, and to unify all efforts and resources to remodule them into highly efficient services that contribute to the excellence and superiority of the Miracle Employment Service.

DEPARTMENT OF *RECRUITMENT*

The Recruitment Department has made Miracle Employment Service an essential destination for international businessmen due to the high reputation that Miracle Employment has gained and represented in the quality and efficiency of the candidates it provides to the markets, the speed of execution, and the credibility of performance. Recruitment Department ensures the reliability of the educational qualifications and experience certificates provided, the matter which has contributed to provide an abroad & reliable database of candidates in all sectors for our client in the Miracle website.



DEPARTMENT OF *FINANCE*

The finance department in a Miracle employment is a key function responsible for managing and overseeing all financial activities to ensure the organization's financial health & stability. This department plays a vital role in the company's growth and strategic decision-making by managing the financial support of the business.



DEPARTMENT OF

HR AND ADMIN



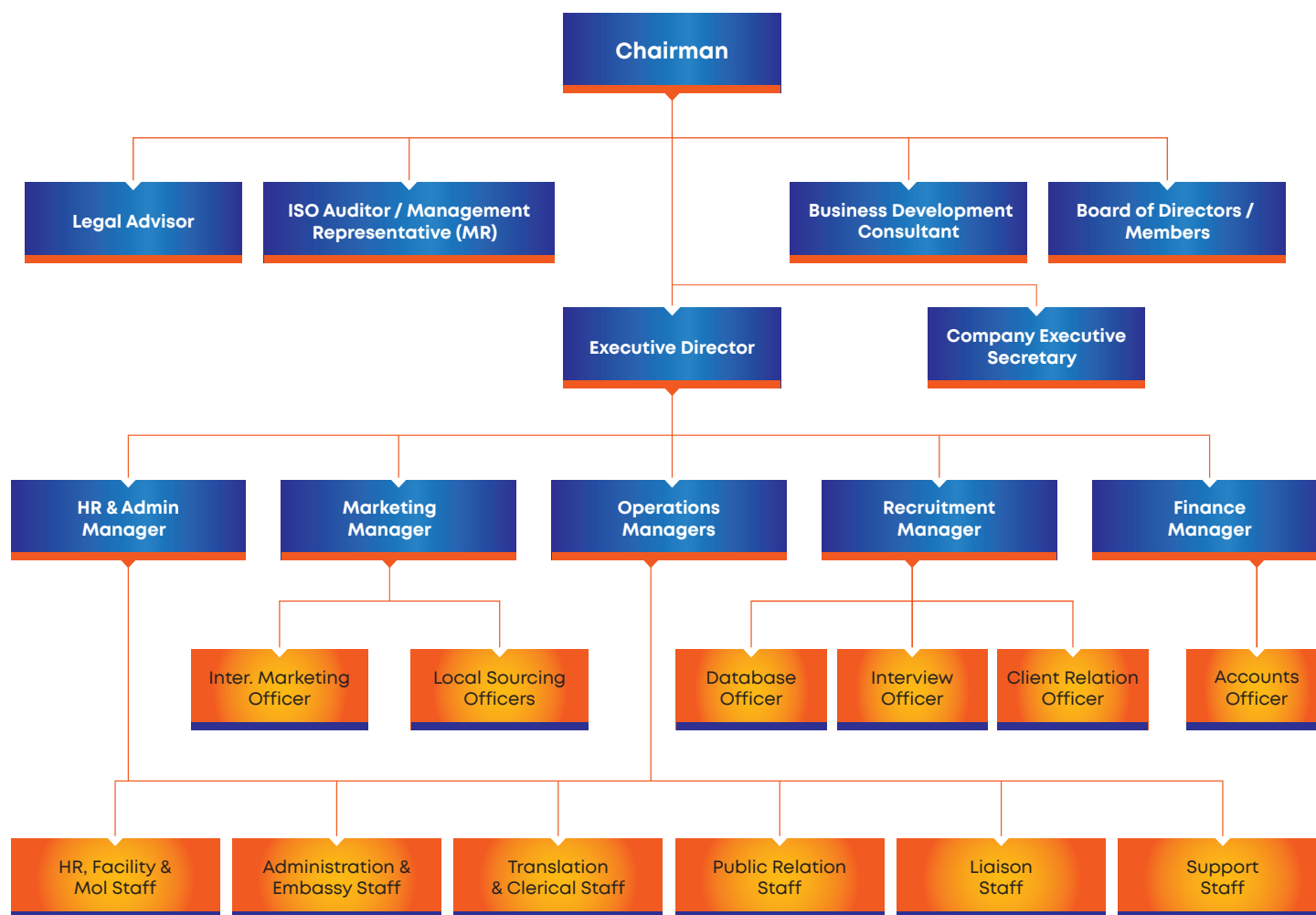
The Administrative Services Department for translations & CVs editing, has been initiated due to the great importance of this process in the employment market. It is an effective tool that assists recruiters to figure out the right candidates in a very short span. Miracle Employment Service has a professional team of certified translators in all fields, as well as specialists in writing CVs, which help job seekers to have their CVs in a professional manner & in line with modern recruitment standards.



DEPARTMENT OF

BUSINESS

A business department is a division within an organization that specializes and the specific needs and goals of the company for business growth within company promotes its longevity. Maintained existing client relationships, develop a network of overseas contacts to new clients, communicate with new clients, assist developing growth strategies & plans, market research, finding & followed up on different methods to identify opportunities, customer feedback and professional services and client satisfaction are our motto.



RECRUITMENT PROCEDURES

Recruitment Process includes various stages, involves many parties & governed by different laws & regulations. In spite of all that, Miracle Employment streamlines the procedures, coordinates the efforts and complete the process within agreed time frame.

OUR SPEED IN ACTIONS...

Our Speed in actions always appreciated by our clients & makes Miracle Employment Service is the first choice when it comes to recruitment from Nepal.



RECRUITMENT PROCEDURES

Documents required from Employer / Client

DEMAND LETTER

POWER OF ATTORNEY

LETTER OF GUARANTEE

AGENCY AGREEMENT

EMPLOYMENT CONTRACT

CONSULATE LETTER

Job Selection Procedure

VACANCY ANNOUNCEMENT

CANDIDATESS' INTERVIEW

MEDICAL

VISA ISSUANCE

IMMIGRATION CLEARANCE

FLIGHT

“We Take Pride of Our Quality”



RECRUITMENT PROCEDURE



“Action is always a base to our Success”



Our Service

SECTORS & MANPOWER CATEGORIES

Professional Sectors:

- Engineers, QA/QC Engineers, Quantity Surveyors, IT Engineers
- Administrative Staff, HR Staff, IT Staff, ISO Auditors
- Accountants, Auditors, Accounting Clerks
- Secretaries, Document Controllers, Receptionists
- Public Relations Officers, Liason Officers
- Camp Boss / Welfare officer

Retail & Trading Sectors:

- Sales personnel, Merchandisers, Cashiers, Data entry operators, Trolley handlers

Security & HSE Sectors:

- HSE Officers
- Life Guards
- Security Officers / Supervisors
- Security Guards, CCTV Guards

Educational & Academic Sectors:

- School Teachers
- Kindergarten Teachers
- Bus Attendants
- Cleaners

Construction, Civil / MEP / Oil & Gas Sectors:

- Land Surveyors, Foremen/Supervisors, CADman / Draftsman & HSE Officers, Storekeepers, Timekeepers
- Scaffolders, Masons, Carpenters, Steel fixers, Gypsum/Ceiling workers, Aluminum & Glass Fabricators, Painters, Plumbers, Electricians
- Sand Blasters, Welders, Fabricators, Insulators, Pipe fitters, HVAC personnel, AC Technicians,
- Auto-Electricians/Mechanics, Equipment Operators, Drivers, Riggers
- Helpers / Labors

Transport, Logistics Sectors:

- Forklift Operators, Packaging, Loading/unloading, Warehouse helpers

Medical Sectors:

- Doctors
- Radiology staff
- Medical Lab Technicians
- Health Assistants / Nurses

Hospitality Sector:

- Chefs/Cooks, Bakers, Baristas, Waiters, Waitresses, Bar-tenders, Stewards, Room Attendants, Bell boy, Gardeners, Laundrymen, Watchmen, Handymen, Cleaners

Facilities Management Sector:

- Front desk staff, Office-boys, Tea-boy, Fire-fighting technicians, PA/GA Technicians, Rope Access cleaners, Ground handling Staffs, Housekeepers, Cleaners

Others Service Sectors:

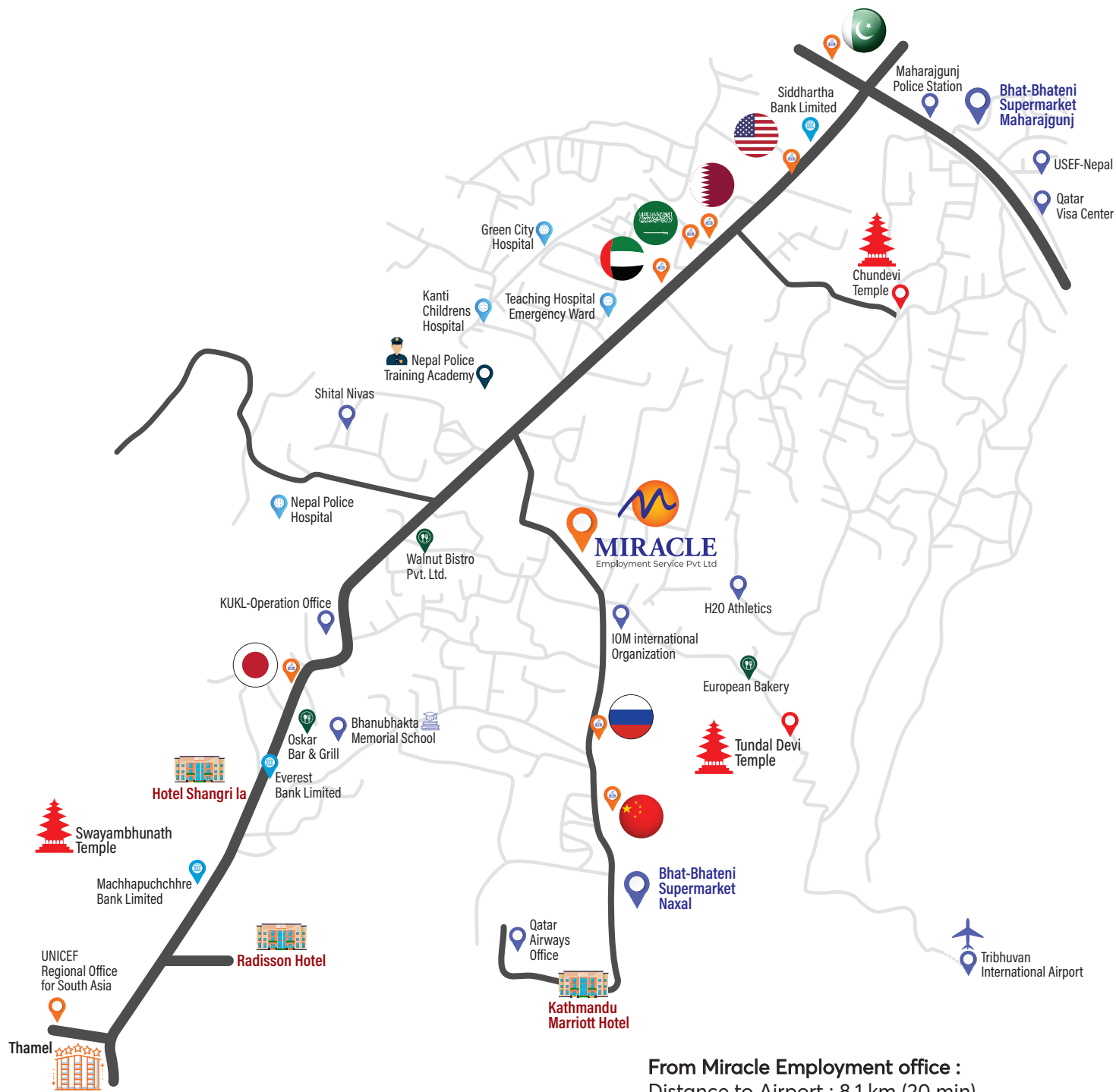
- Manufacturing workers
- Dairy Products Workers
- Petrol / Fuel station Workers (*Petrol fillers*)
- Furniture workers (*Wood Carving and Wood Painting workers*)
- Agriculture Workers
- Poultry farming Workers











From Miracle Employment office :

Distance to Airport : 8.1 km (20 min)

Distance to Downtown 2.4 km (9 min)

Distance to main Embassies: 2.2 km (8 min)



GET IN TOUCH



+977 9851 068 021



Licence No.: 719/064/65
CR No. 46248/063/064

Miracle Employment Service Pvt. Ltd.
Baluwatar, Kathmandu, Nepal
+977 1 4515239, 4516930
e-Mail: info@miraclenepal.com
Website: www.miraclenepal.com